

Intuition Ultraloc® MB

Product Type	Broadloom	
Collection	Building Character	
Style Number	60777	
Construction	Multi-Level Pattern/Cut Loop	
Fibre	Ecosolution Q® Nylon	
Dye Method	100% Solution Dyed	
Primary Backing	Synthetic	
Secondary Backing	Ultraloc® MB	
Protective Treatments	SSP® Shaw Soil Protection	
Recommended Adhesive	H1000, H1200 or H3800	
	u.s.	metric
Product Size	12 ft	3.66 m
Gauge	1/12 in	47.2 per 10 cm
Stitches	10.0 per in	39.0 per 10 cm
Average Density	6158 oz/yd³	0.228 g/cm³
Kilotex		12.66
Total Thickness	0.306 in	7.77 mm
Tufted Weight	26 oz/yd²	881.5 g/m²
Installation Pattern Repeat	36 in x 40 in	91.44 cm x 101.6 cm



Recommended Installation Method

Direct Glue, Double Glue, Stretch-In

Data + Testing

Pill Test	Pass
Radiant Panel (Astm E648)	Class I
Nbs Smoke	Less Than 450
Electrostatic Propensity	Less Than 3.5 kv
Cri Green Label Plus (Glp)	GLP2271
Ada Compliance	>0.6, Meets the recommended static coefficient of friction for ADA walking surfaces and accessible routes***

Test Reports may be included or listed by the manufacturing/inventory style number as opposed to the noted selling style number.

Warranties

Lifetime Commercial Limited

Coordinating Products

Broadloom: **Sophistication Ultraloc® MB, Quest Ultraloc® MB**

Attributes + Certifications

Health & Wellbeing

Material Ingredient Transparency

Indoor Air Quality

**Cradle to Cradle Certified® | Silver Level (Version 3.1)**  
**NSF 140 | Gold**  
**CRI Green Label Plus (GLP) | GLP2271**

Climate Impact

Environmental Product Declaration (EPD)

Total Recycled Content

Product Packaging

**3rd Party Certified in Accordance with ISO14044, ISO14025 & EN15804**  
**<1% (Pre-Consumer <1% | Post-Consumer 0%)**  
**100% Recyclable**

Global Product Assessment

**CE Marking (EN 14041) | 3rd Party Certified**  
**Environmental Guarantee\* | Re[turn] Reclamation Program\* | Pickup & Delivery Available**  
**Country of Origin\*\* | USA**

Green Leed Contribution Credit

MR Credit: Building Product Disclosure and Optimization  
Environmental Product Declarations - Option 1: Environmental Product Declaration (EPD)

**3rd Party Certified in Accordance with ISO14044, ISO14025 & EN15804**

MR Credit: Building Product Disclosure and Optimization  
Material Ingredients - Option 1: Material Ingredient Reporting

**C2C Silver Level (Version 3.1)**

MR Credit: Building Product Disclosure and Optimization  
Material Ingredients - Option 2: Material Ingredient Optimization

**C2C Silver Level (Version 3.1)**

EQ Credit: Low Emitting Materials  
Option 1: Product Category Calculations

**Green Label Plus Certification: GLP2271**

Available Colorways



Humble Beginnin 77155  
LRV 14.4



Enriched Wisdom 77330  
LRV 8.8



First Impressio 77402  
LRV 9.2



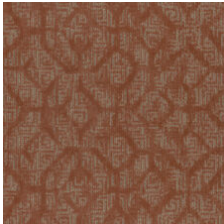
Self Reflection 77484  
LRV 10.1



Major Milestone 77515  
LRV 15.7



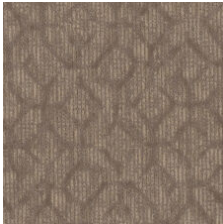
Refined Eleganc 77585  
LRV 14.7



Adventurous Spi 77665  
LRV 12.2



Express Gratitu 77740  
LRV 13.9



Warm Intentions 77761  
LRV 18.6

## Additional Information

\* To learn more about the recyclability of our products and our Environmental Guarantee, please visit [shawcontract.com/sustainability](https://shawcontract.com/sustainability).

\*\*Meets or exceeds all local and national regulations in country of manufacture. (Manufactured in an ISO 9001 & ISO 14001 certified facility or equivalent)

\*\*\*This carpet is manufactured to be ADA compliant, but to be fully ADA compliant, the end-user must ensure the carpet is adhered to the floor and installed as outlined in the ADA standards.

[Installation Guidelines](#)

[Maintenance Guidelines](#)

Specifications are subject to nominal manufacturing variance. Material supply and/or manufacturing processes may necessitate changes without notice.

This product is an exclusive design and may not be duplicated in any manner. Use of this design in the creation of another product design is also strictly prohibited.

Visit [shawcontract.com/testing](https://shawcontract.com/testing) for more information.



**PVC-Free**

Corporate Headquarters +1 800 257 7429 | +1 706 532 7984 | **Atlanta** +1 404 853 7429 | **Bengaluru** +91 80 6773 0202 | **Beijing** +86 10 6568 588 | **Chicago** +1 312 467 1331 | **Dubai** +971 4 584 6956 | **Hong Kong** +852 2623 0371 | **Latin America (Miami)** +1 305 827 5912 | **London** +44 207 961 4120 | **Los Angeles** +1 800 233 1614 | **Melbourne** +61 3 9939 8543 | **Mexico City** +55 5010 7600 | **Mumbai** +91 22 6284 5050 | **Nantong** +86 400 800 7429 | **New York** +1 212 953 7429 | **Paris** +33 (0) 1 81 22 44 39 | **San Francisco** +1 415 955 1920 | **Santiago** +562 2431 5000 x 550 | **São Paulo** +55 11 3071 1702 | **Shanghai** +86 21 3338 4000 | **Singapore** +65 6733 1811 | **Sydney** +1 800 556 302